

ISSUED
FOR BIDDING
NOT FOR CONSTRUCTION
ISSUED: 04.16.20

CBHF
Engineers, PLLC

2246 Yaupon Drive
Wilmington, NC 28401
Phone: 910.791.4000
Fax: 910.791.5266
www.cbhfenr.com
© Copyright 2020 CBHF Engineers, PLLC NCA P-0556

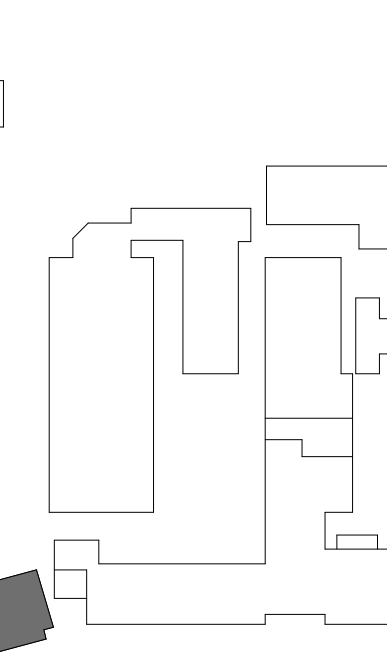
FINAL DRAWING
DO NOT USE FOR
CONSTRUCTION

PROJECT TITLE
**WEST
BRUNSWICK
HIGH SCHOOL
NEW BUILDING**

550 WHITEVILLE ROAD N.W.
SHALLOTTE, NC 28470

DSP #: 100
DPI SCHOOL #: 1167

SHEET TITLE
**CLASSROOM
BUILDING FLOOR
PLANS - HVAC**



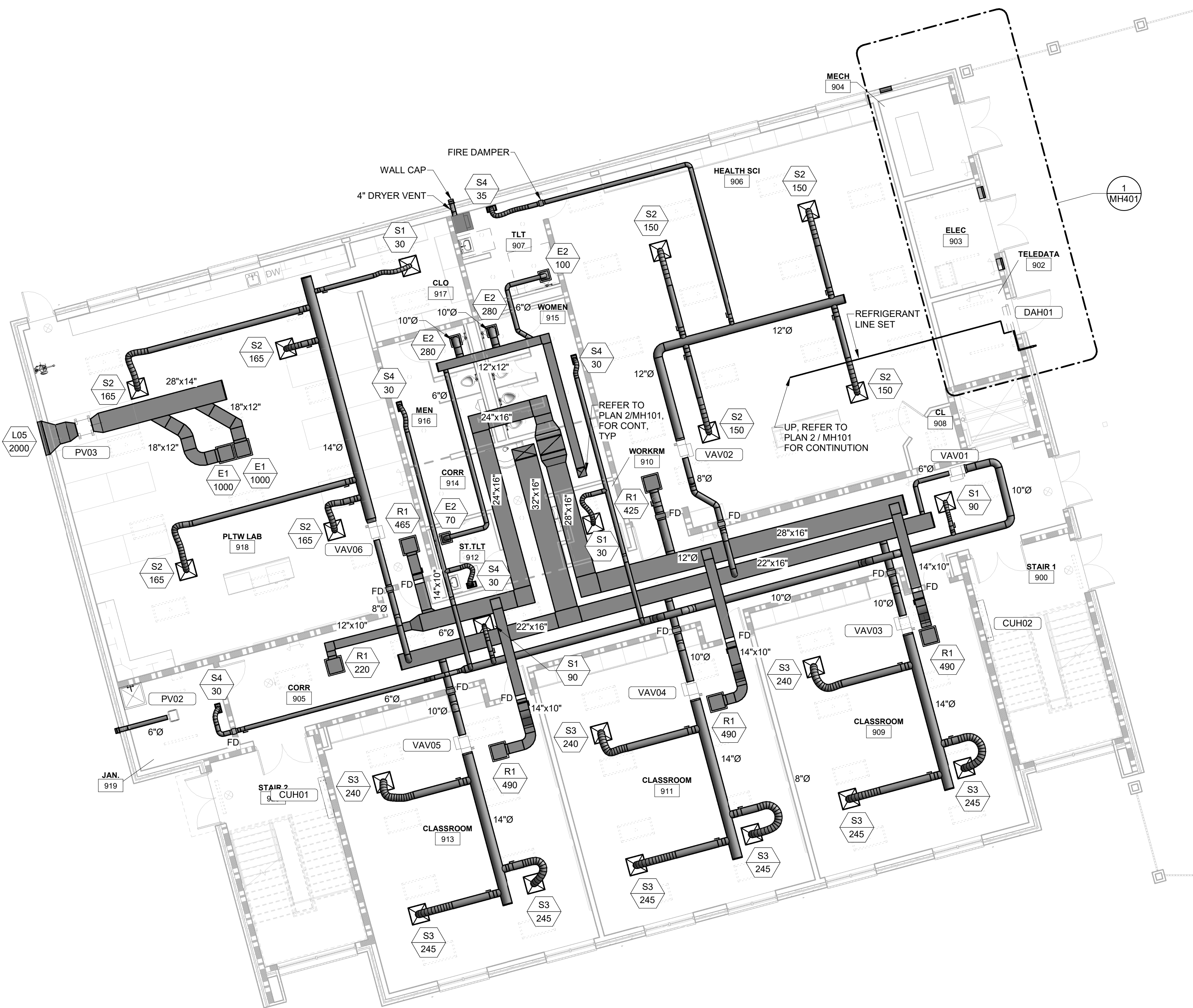
KEY PLAN		
ISSUE BLOCK		
Mark	Date	Description
1	05.04.20	ADDENDUM 1
	04.16.20	ISSUED FOR BIDDING
	03.20.20	100% REV. SUBMISSION
	10.14.19	NCDPI DD SUBMISSION
	07.30.19	SD PROGRESS DWGS
	07.11.19	NCDPI SD SUBMISSION

PROJECT NO: 2019082.00
DATE: 01.20.2020
SCALE: 1/8" = 1'-0"
DRAWN BY: GRM PROJ MGR: DMH

MH101
COPYRIGHT © 2020

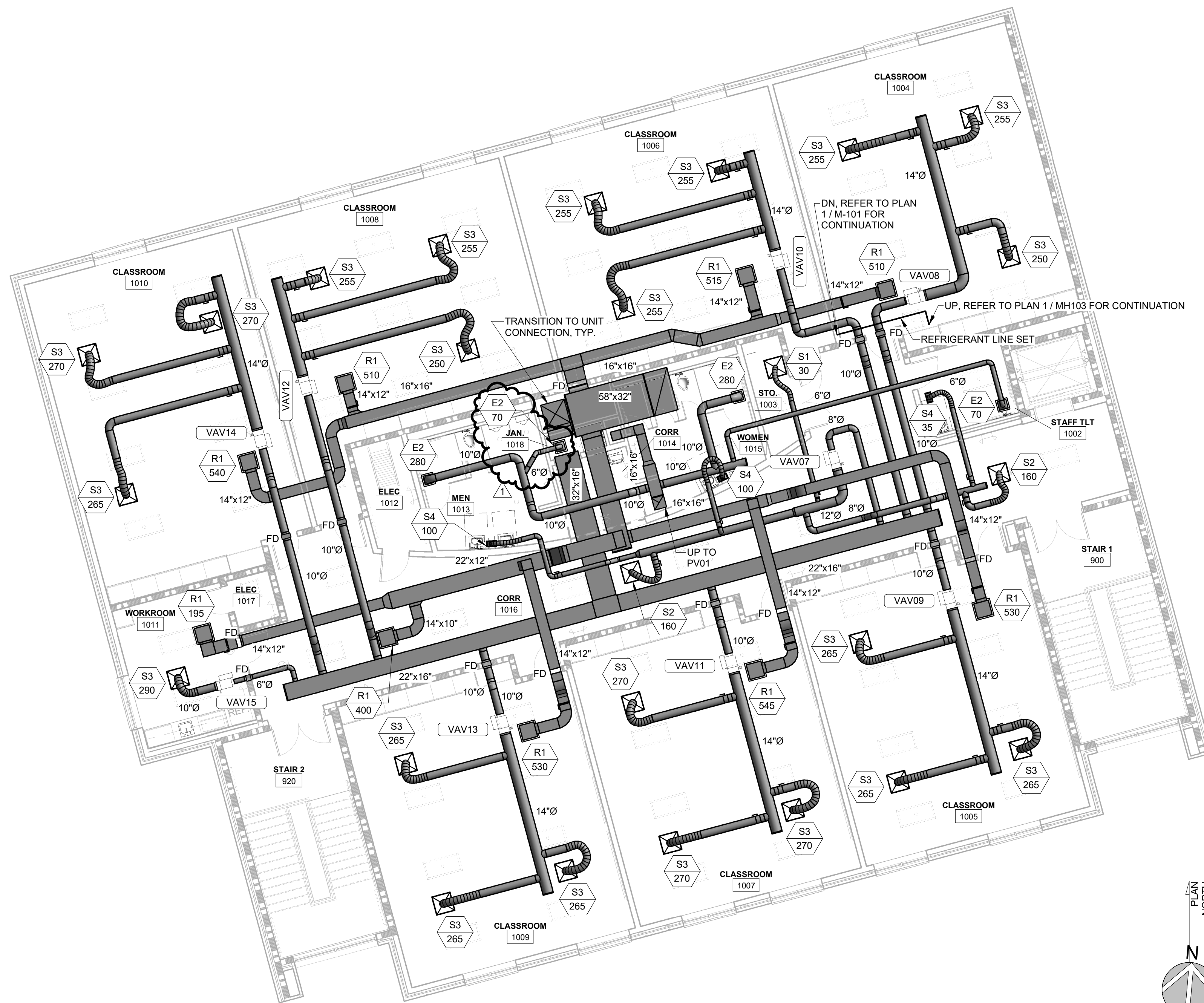
FLOOR PLAN SHEET NOTES

1. MAINTAIN MANUFACTURER'S CLEARANCE REQUIREMENTS FOR INDOOR EQUIPMENT.
2. MECHANICAL CONTRACTOR TO COORDINATE WITH OTHER TRADES PRIOR TO BEGINNING WORK.
3. REFER TO ARCHITECTURAL DRAWINGS FOR RATED ASSEMBLY U/L NUMBERS (WALLS, FLOOR / CEILINGS, ETC).
4. COORDINATED CONDENSATE PIPE ROUTING WITH GENERAL CONTRACTOR AND OWNER, TYPICAL.
5. CONCERNING DIFFUSER LAYOUT AND CEILING TYPE, REFER TO ARCHITECTURAL PLANS FOR FURTHER INFORMATION.
6. IN GENERAL, LOCATE VAV TERMINALS ABOVE DOOR SWING TO ASSURE CONTINUED ACCESS.



1 CLASSROOM BUILDING FIRST
FLOOR PLAN - HVAC

SCALE: 1/8" = 1'-0"



2 CLASSROOM BUILDING
SECOND FLOOR PLAN - HVAC

SCALE: 1/8" = 1'-0"

8' 4' 0' 8'
SCALE: 1/8" = 1'-0"